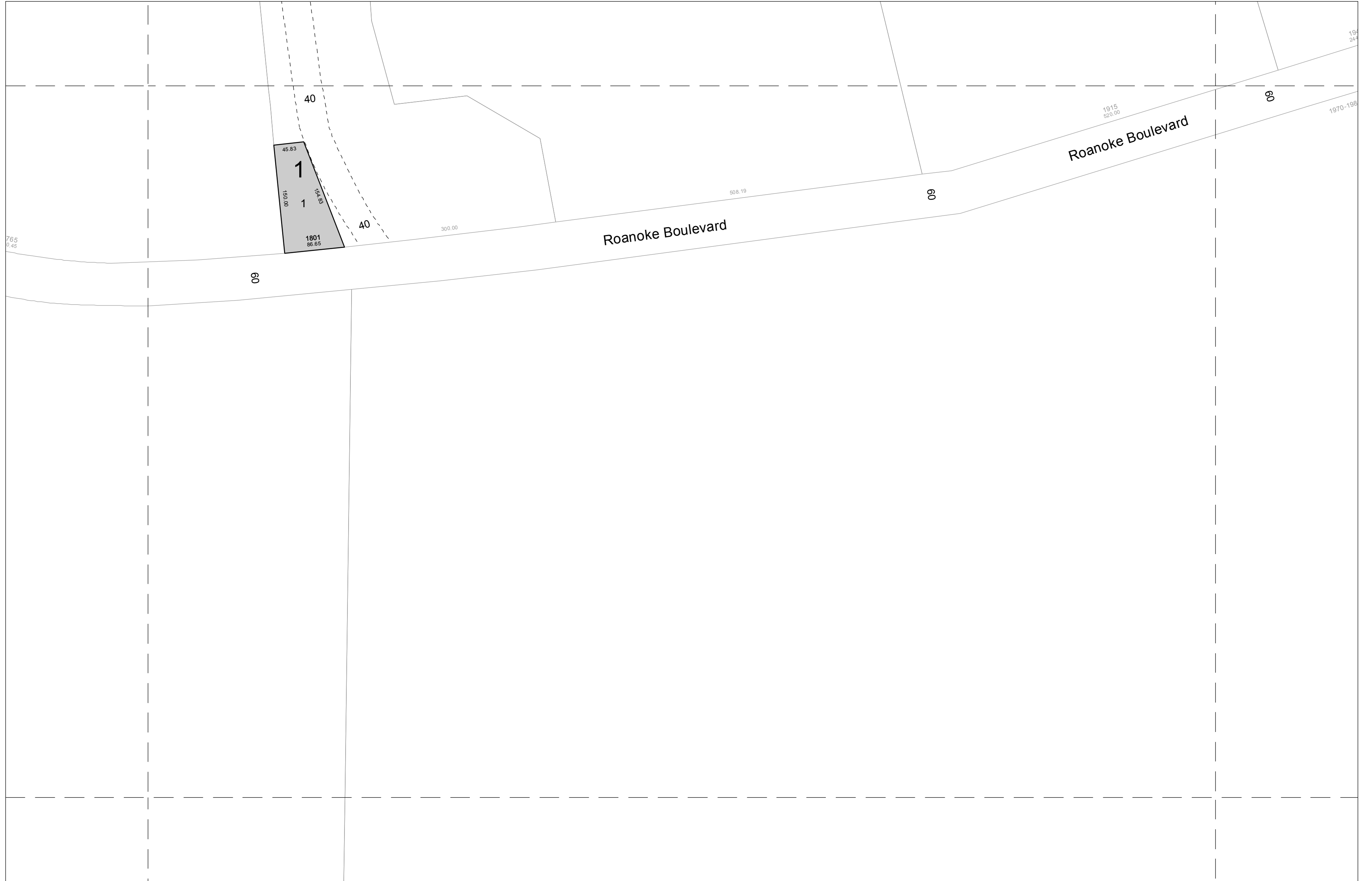


Project File: x:\engineering\_gis\TaxMaps\July2004\tax228.mxd

229



223

Roanoke Boulevard

Roanoke Boulevard

227

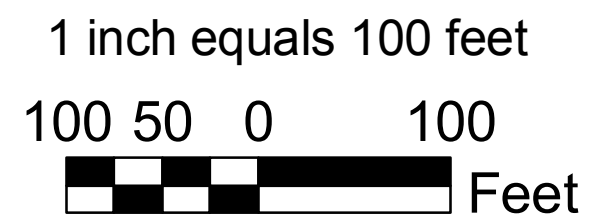
251



CITY OF SALEM  
 ENGINEERING DEPARTMENT  
 114 NORTH BROAD STREET  
 P.O. BOX 869  
 SALEM, VIRGINIA 24153-0869  
 (540) 375-3032



MAPPING COMPUTED ON THE VIRGINIA  
 STATE PLANE COORDINATE SYSTEM -  
 SOUTH ZONE - ADJUSTED TO THE  
 NORTH AMERICAN DATUM OF 1983.  
 TIC COORDINATE INFORMATION IS  
 AVAILABLE IN THE CITY OF SALEM  
 ENGINEERING DEPARTMENT.



**MAP FEATURES**

- TaxMap Grid
- Subdivision Lines
- City of Salem Boundary
- City of Salem Parcels
- Tax Parcel 228

**MAP NUMBER**

**228**

July 2004