

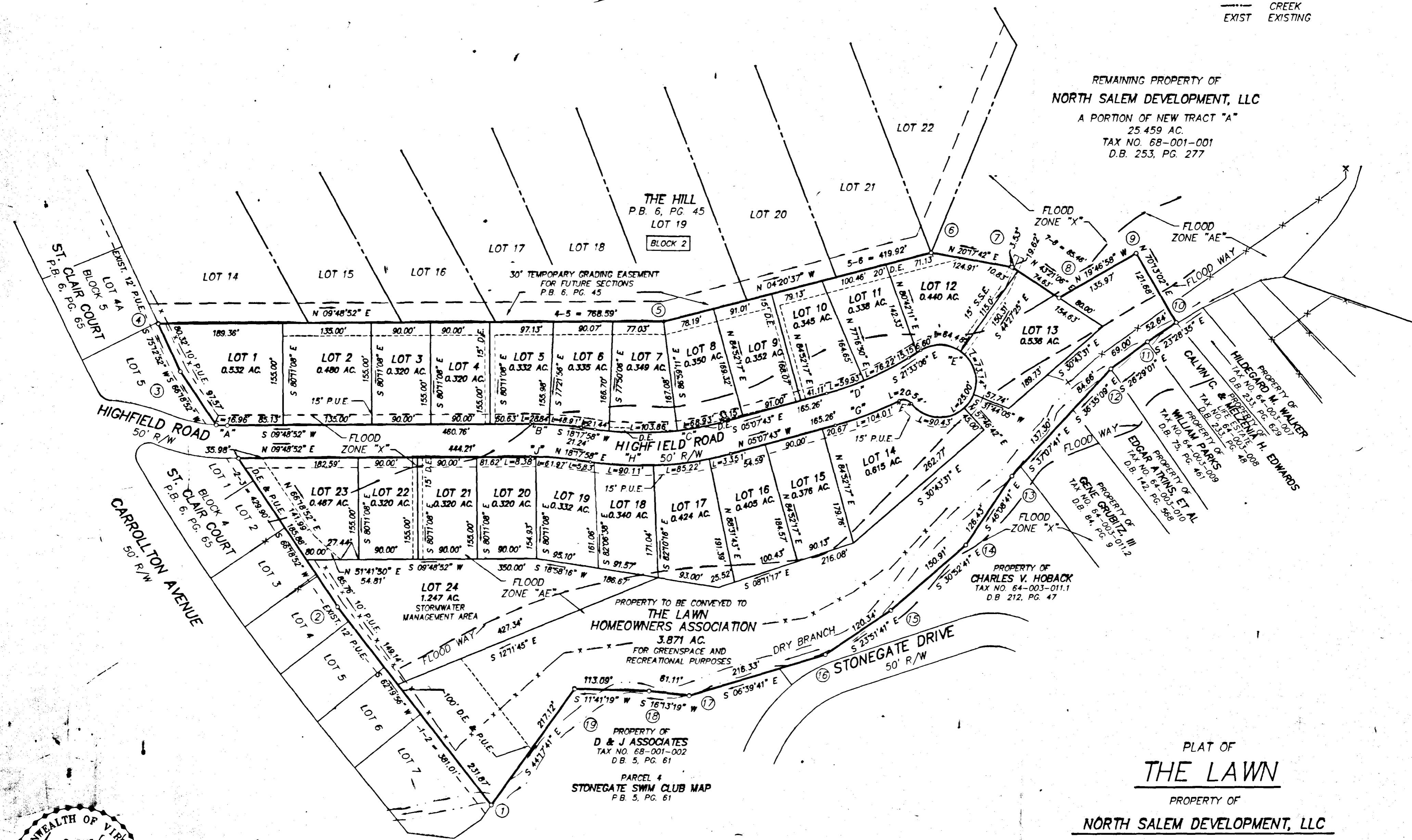
MERIDIAN OF VIRGINIA
STATE PLANE COORDINATE
SYSTEM
SOUTH ZONE
NAD 83

LEGEND

- D.E. DRAINAGE EASEMENT
- S.S.E. SANITARY SEWER EASEMENT
- P.U.E. PUBLIC UTILITY EASEMENT
- M.B.L. MINIMUM BUILDING LINE
- X- EXISTING FENCE
- CREEK
- EXIST EXISTING

NOTES:
1/2" REBAR WITH YELLOW CAP SET AT ALL CORNERS
UNLESS NOTED OTHERWISE.

REMAINING PROPERTY OF
NORTH SALEM DEVELOPMENT, LLC
A PORTION OF NEW TRACT "A"
25 459 AC.
TAX NO. 68-001-001
D.B. 253, PG. 277



PROPERTY TO BE CONVEYED TO
THE LAWN
HOMEOWNERS ASSOCIATION
3.871 AC.
FOR GREENSPACE AND
RECREATIONAL PURPOSES

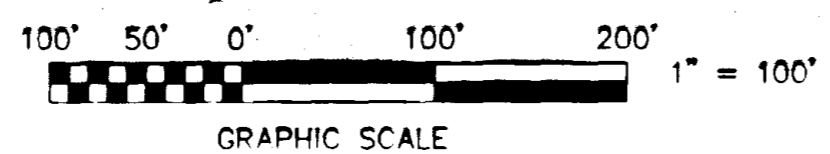
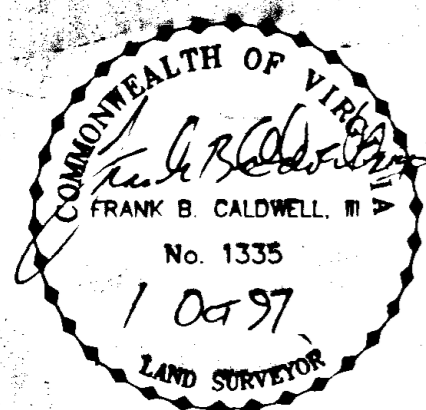
PROPERTY OF
D & J ASSOCIATES
TAX NO. 68-001-002
D.B. 5, PG. 61
PARCEL 4
STONEGATE SWIM CLUB MAP
P.B. 5, PG. 61

PROPERTY OF
CHARLES V. HOBACK
TAX NO. 64-003-011.1
D.B. 212, PG. 47

PLAT OF
THE LAWN

PROPERTY OF
NORTH SALEM DEVELOPMENT, LLC

SALEM, VIRGINIA
T. P. PARKER & SON
ENGINEERS - SURVEYORS - PLANNERS



TAX NO.: 68-001-001
DRAWN: LRD/165
CALC.: JMS
N.B.: N.S.E.D. #1, #2

SCALE: 1" = 100'
OCTOBER 1, 1997
W.O.: 97-0019