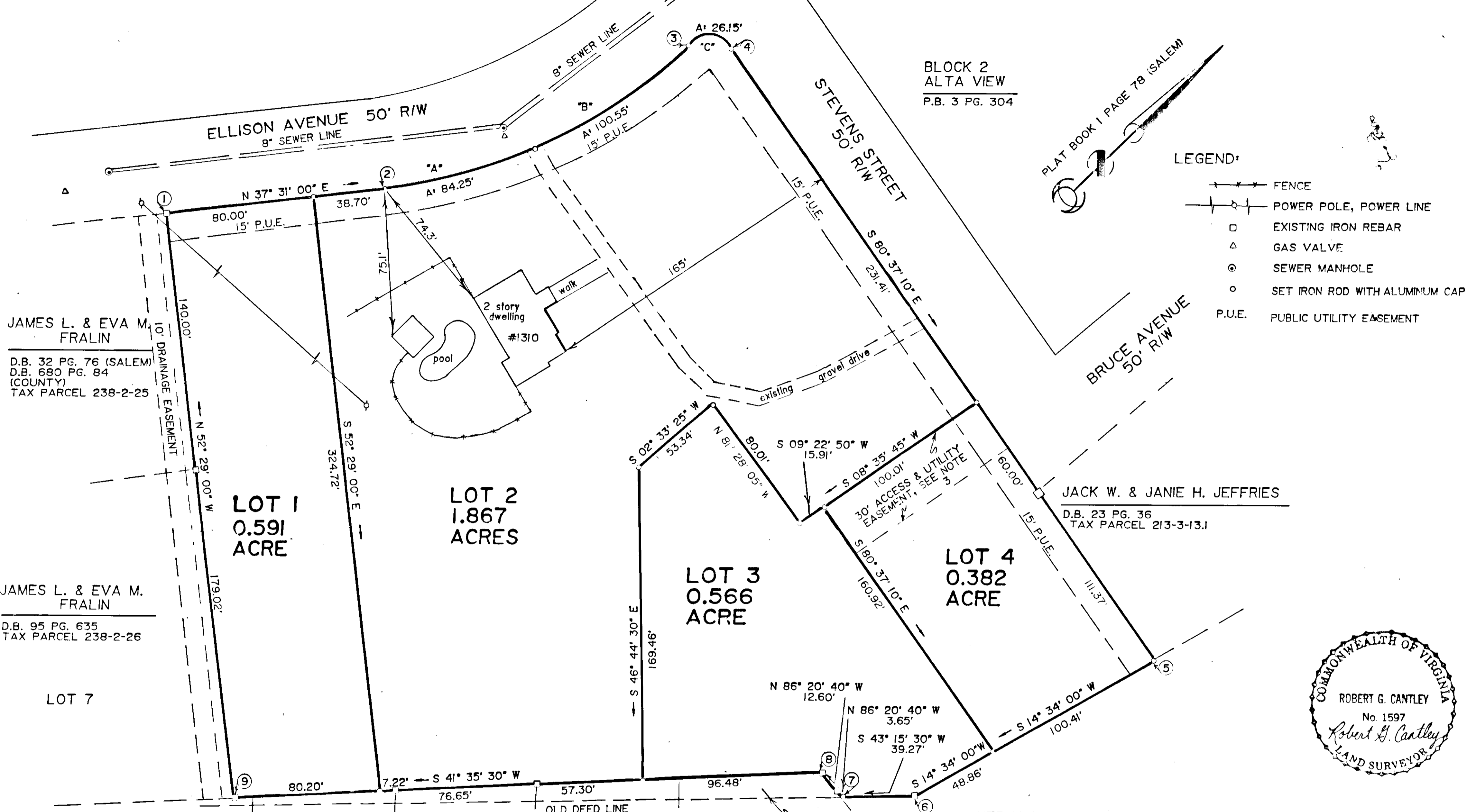


MOUNTAIN TOP SURVEYORS, INC. P. O. BOX 22 LOW MOOR, VIRGINIA 24457 PH. (703) 862-5215
 P. O. BOX 46 FINCASTLE, VIRGINIA 24090 PH. (703) 473-3695

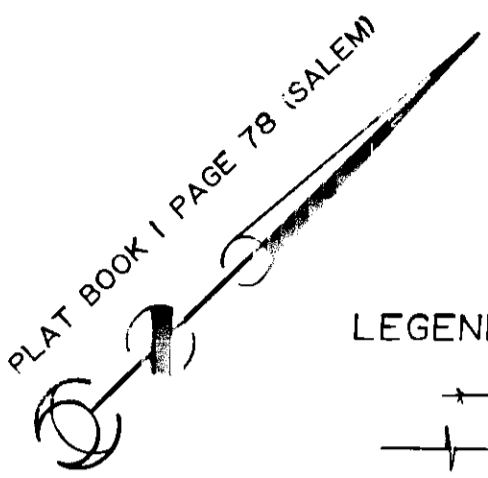
CURVE DATA				
CURVE	ARC	RADIUS	BEARING	CHORD
A	84.25'	278.47'	N 28° 51' 00" E	83.93'
B	100.55'	278.47'	N 09° 50' 15" E	100.01'
C	26.15'	15.00'	N 49° 26' 20" E	22.96'



JAMES L. & EVA M. FRALIN
 D.B. 32 PG. 76 (SALEM)
 D.B. 680 PG. 84 (COUNTY)
 TAX PARCEL 238-2-25

JAMES L. & EVA M. FRALIN
 D.B. 95 PG. 635
 TAX PARCEL 238-2-26

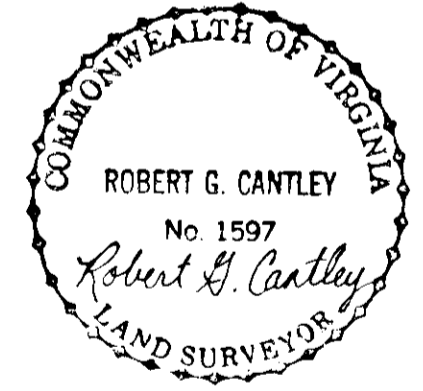
BLOCK 2
 ALTA VIEW
 P.B. 3 PG. 304



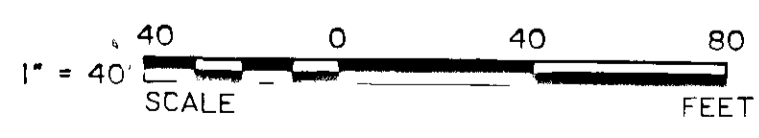
- LEGEND:
- FENCE
 - POWER POLE, POWER LINE
 - EXISTING IRON REBAR
 - △ GAS VALVE
 - SEWER MANHOLE
 - SET IRON ROD WITH ALUMINUM CAP
 - P.U.E. PUBLIC UTILITY EASEMENT

JACK W. & JANIE H. JEFFRIES
 D.B. 23 PG. 36
 TAX PARCEL 213-3-13.1

HERMAN A. SINK
 D.B. 39 PG. 585
 TAX PARCEL 213-3-15



PLAT OF SURVEY OF
FER SUBDIVISION
 A SUBDIVISION OF LOT 8 OF
 LINIEL G. GREGORY, JR. & MARGARET F. GREGORY SUBDIVISION
 SHOWING NEW LOTS 1 THRU 4 INCLUSIVE
 CITY OF SALEM, VIRGINIA
 SURVEYED AUGUST 18, 1988
 SCALE: 1" = 40'



TOTAL BOUNDARY CONTAINS
 3.406 ACRES.

WOODGATE SUBDIVISION
 P.B. 2 PG. 50
 TAX PARCELS 238-2-2.9, 2.8, 2.7, 2.6, & 2.5

REVISED NOVEMBER 17, 1989
 REVISED NOVEMBER 9, 1988

SHEET 2 OF 2
 PLAT NO. 50.00092 - 2 - 3
 DRAWN BY: ELIZABETH K. MARTIN