

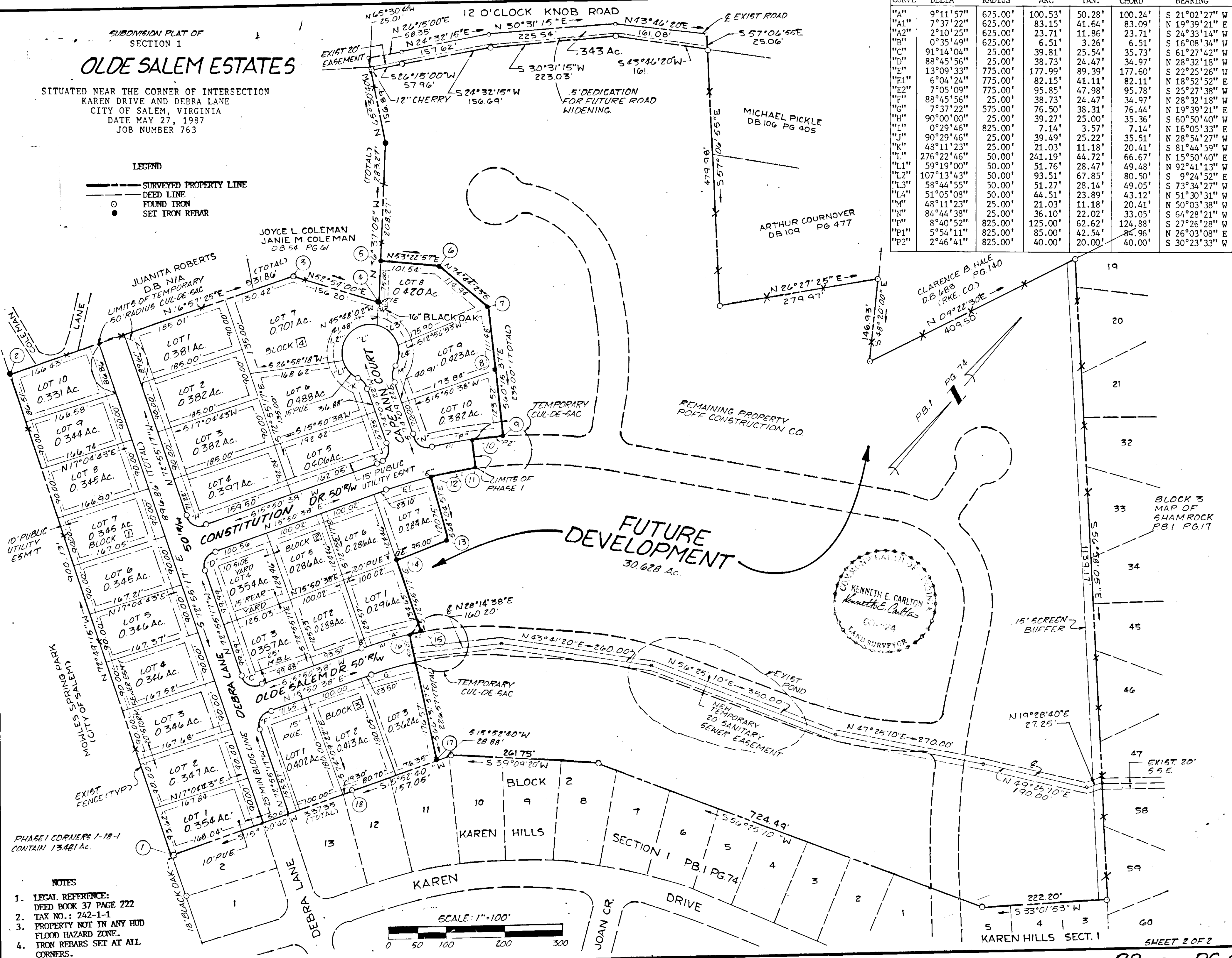
# OLDE SALEM ESTATES

SITUATED NEAR THE CORNER OF INTERSECTION  
 KAREN DRIVE AND DEBRA LANE  
 CITY OF SALEM, VIRGINIA  
 DATE MAY 27, 1987  
 JOB NUMBER 763

**LEGEND**

- SURVEYED PROPERTY LINE
- - - DEED LINE
- FOUND IRON
- SET IRON REBAR

CURVE	DELTA	RADIUS	ARC	TAN.	CHORD	BEARING
"A"	9°11'57"	625.00'	100.53'	50.28'	100.24'	S 21°02'27" W
"A1"	7°37'22"	625.00'	83.15'	41.64'	83.09'	N 19°39'21" E
"A2"	2°10'25"	625.00'	23.71'	11.86'	23.71'	S 24°33'14" W
"B"	0°35'49"	625.00'	6.51'	3.26'	6.51'	S 16°08'34" W
"C"	91°14'04"	25.00'	39.81'	25.54'	35.73'	S 61°27'42" W
"D"	88°45'56"	25.00'	38.73'	24.47'	34.97'	N 28°32'18" W
"E"	13°09'33"	775.00'	177.99'	89.39'	177.60'	S 22°25'26" W
"E1"	6°04'24"	775.00'	82.15'	41.11'	82.11'	N 18°52'52" E
"E2"	7°05'09"	775.00'	95.85'	47.98'	95.78'	S 25°27'38" W
"F"	88°45'56"	25.00'	38.73'	24.47'	34.97'	N 28°32'18" W
"G"	7°37'22"	575.00'	76.50'	38.31'	76.44'	N 19°39'21" E
"H"	90°00'00"	25.00'	39.27'	25.00'	35.36'	S 60°50'40" W
"I"	0°29'46"	825.00'	7.14'	3.57'	7.14'	N 16°05'33" E
"J"	90°29'46"	25.00'	39.49'	25.22'	35.51'	N 28°54'27" W
"K"	48°11'23"	25.00'	21.03'	11.18'	20.41'	S 81°44'59" W
"L"	276°22'46"	50.00'	241.19'	44.72'	66.67'	N 15°50'40" E
"L1"	59°19'00"	50.00'	51.76'	28.47'	49.48'	N 92°41'13" W
"L2"	107°13'43"	50.00'	67.85'	67.85'	80.50'	S 9°24'52" E
"L3"	58°44'55"	50.00'	51.27'	28.14'	49.05'	S 73°34'27" W
"L4"	51°05'08"	50.00'	44.51'	23.89'	43.12'	N 51°30'31" W
"M"	48°11'23"	25.00'	21.03'	11.18'	20.41'	N 50°03'38" W
"N"	84°44'38"	25.00'	36.10'	22.02'	33.05'	S 64°28'21" W
"P"	8°40'52"	825.00'	125.00'	62.62'	124.88'	S 27°26'28" W
"P1"	5°54'11"	825.00'	85.00'	42.54'	84.96'	N 26°03'08" E
"P2"	2°46'41"	825.00'	40.00'	20.00'	40.00'	S 30°23'33" W



- NOTES**
- LEGAL REFERENCE: DEED BOOK 37 PAGE 222
  - TAX NO.: 242-1-1
  - PROPERTY NOT IN ANY HUD FLOOD HAZARD ZONE.
  - IRON REBARS SET AT ALL CORNERS.

