

DETAIL  
(NO SCALE)

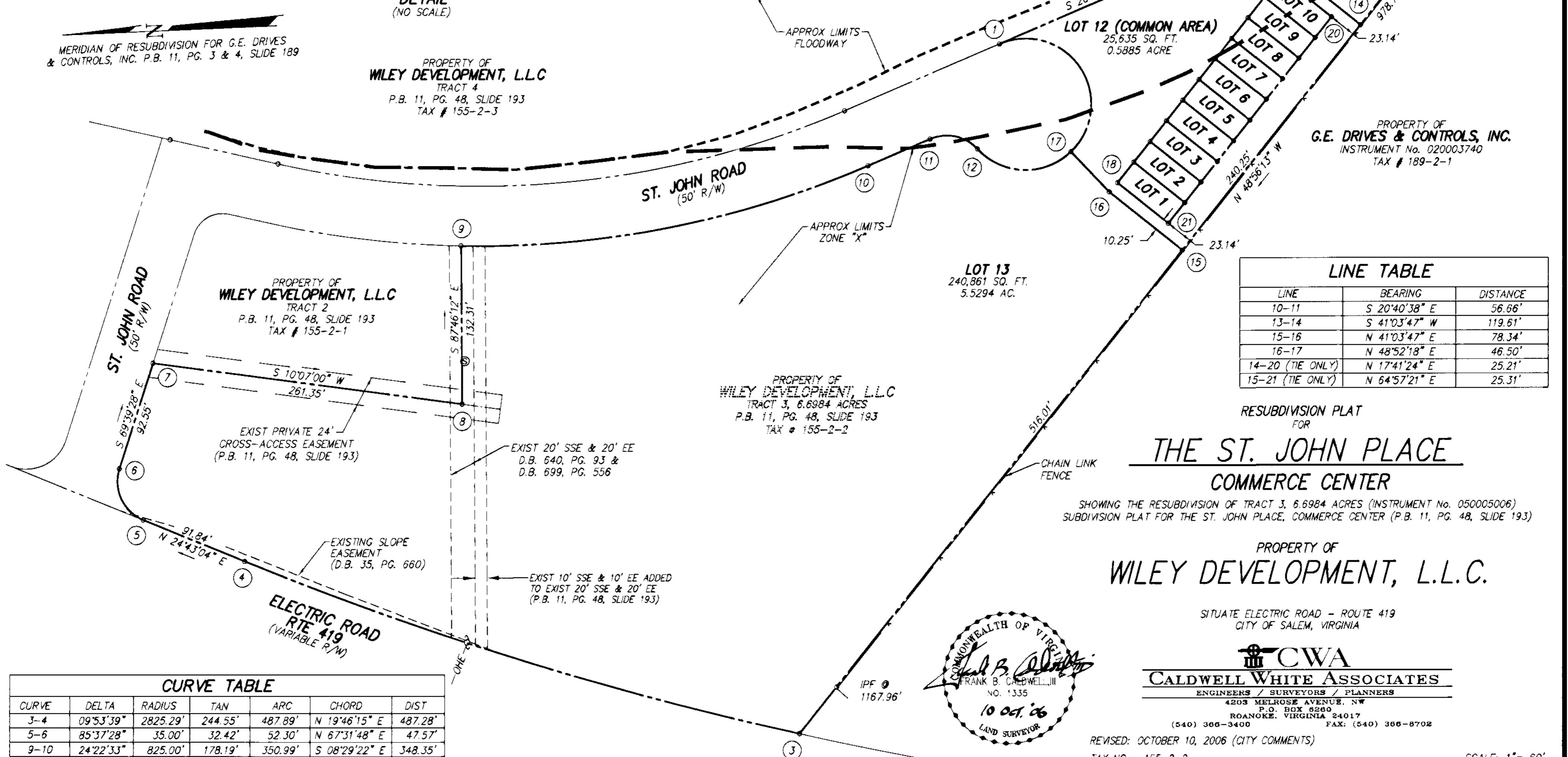
- LEGEND**
- APPROX APPROXIMATE
  - EE ELECTRIC EASEMENT
  - G GAS LINE
  - IPF IRON PIN FOUND
  - OHE OVERHEAD ELECTRIC
  - SSE SANITARY SEWER EASEMENT
  - MW MONITORING WELL
  - SM SANITARY SEWER MANHOLE
  - PP POWER POLE

PROPERTY OF  
**WILEY DEVELOPMENT, L.L.C.**  
TRACT 4  
P.B. 11, PG. 48, SLIDE 193  
TAX # 155-2-3

MERIDIAN OF RESUBDIVISION FOR G.E. DRIVES & CONTROLS, INC. P.B. 11, PG. 3 & 4, SLIDE 189

PROPERTY OF  
**WILEY DEVELOPMENT, L.L.C.**  
TRACT 4  
P.B. 11, PG. 48, SLIDE 193  
TAX # 155-2-3

PROPERTY OF  
**G.E. DRIVES & CONTROLS, INC.**  
INSTRUMENT No. 020003740  
TAX # 189-2-1

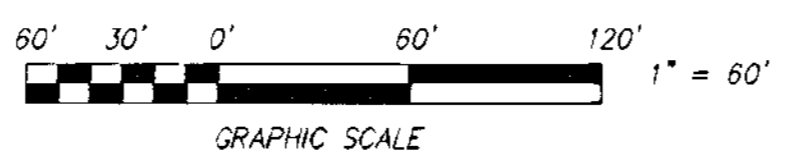


**LINE TABLE**

LINE	BEARING	DISTANCE
10-11	S 20°40'38" E	56.66'
13-14	S 41°03'47" W	119.61'
15-16	N 41°03'47" E	78.34'
16-17	N 48°52'18" E	46.50'
14-20 (TIE ONLY)	N 17°41'24" E	25.21'
15-21 (TIE ONLY)	N 64°57'21" E	25.31'

**CURVE TABLE**

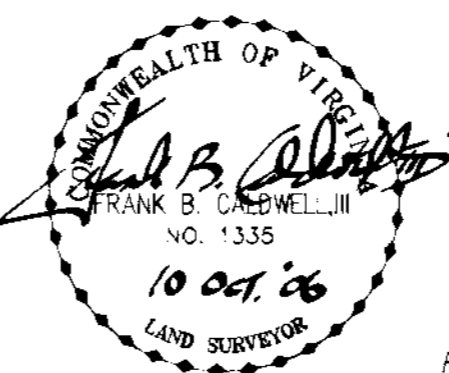
CURVE	DELTA	RADIUS	TAN	ARC	CHORD	DIST
3-4	09°53'39"	2825.29'	244.55'	487.89'	N 19°46'15" E	487.28'
5-6	85°37'28"	35.00'	32.42'	52.30'	N 67°31'48" E	47.57'
9-10	24°22'33"	825.00'	178.19'	350.99'	S 08°29'22" E	348.35'
11-12	70°31'44"	35.00'	24.75'	43.08'	S 14°35'14" W	40.41'
12-1	250°31'44"	55.00'	77.78'	240.49'	S 75°24'46" E	89.81'
12-17	90°58'48"	55.00'	55.95'	87.33'	S 04°21'42" W	78.44'
17-1	159°32'56"	55.00'	304.90'	153.16'	N 59°05'50" E	108.25'



RESUBDIVISION PLAT FOR  
**THE ST. JOHN PLACE COMMERCE CENTER**  
SHOWING THE RESUBDIVISION OF TRACT 3, 6.6984 ACRES (INSTRUMENT No. 050005006)  
SUBDIVISION PLAT FOR THE ST. JOHN PLACE, COMMERCE CENTER (P.B. 11, PG. 48, SLIDE 193)

PROPERTY OF  
**WILEY DEVELOPMENT, L.L.C.**

SITUATE ELECTRIC ROAD - ROUTE 419  
CITY OF SALEM, VIRGINIA



**CWA**  
**CALDWELL WHITE ASSOCIATES**  
ENGINEERS / SURVEYORS / PLANNERS  
4203 MELROSE AVENUE, NW  
P.O. BOX 8260  
ROANOKE, VIRGINIA 24017  
(540) 366-3400 FAX: (540) 366-8708

REVISED: OCTOBER 10, 2006 (CITY COMMENTS)  
TAX NO.: 155-2-2  
DATE: SEPTEMBER 6, 2006  
CALC.: JW CHK'D: FBC, III  
CLOSED: JW

SCALE: 1" = 60'  
DRAWN: JW  
N.B.: WES-43  
W.O.: 05-0082