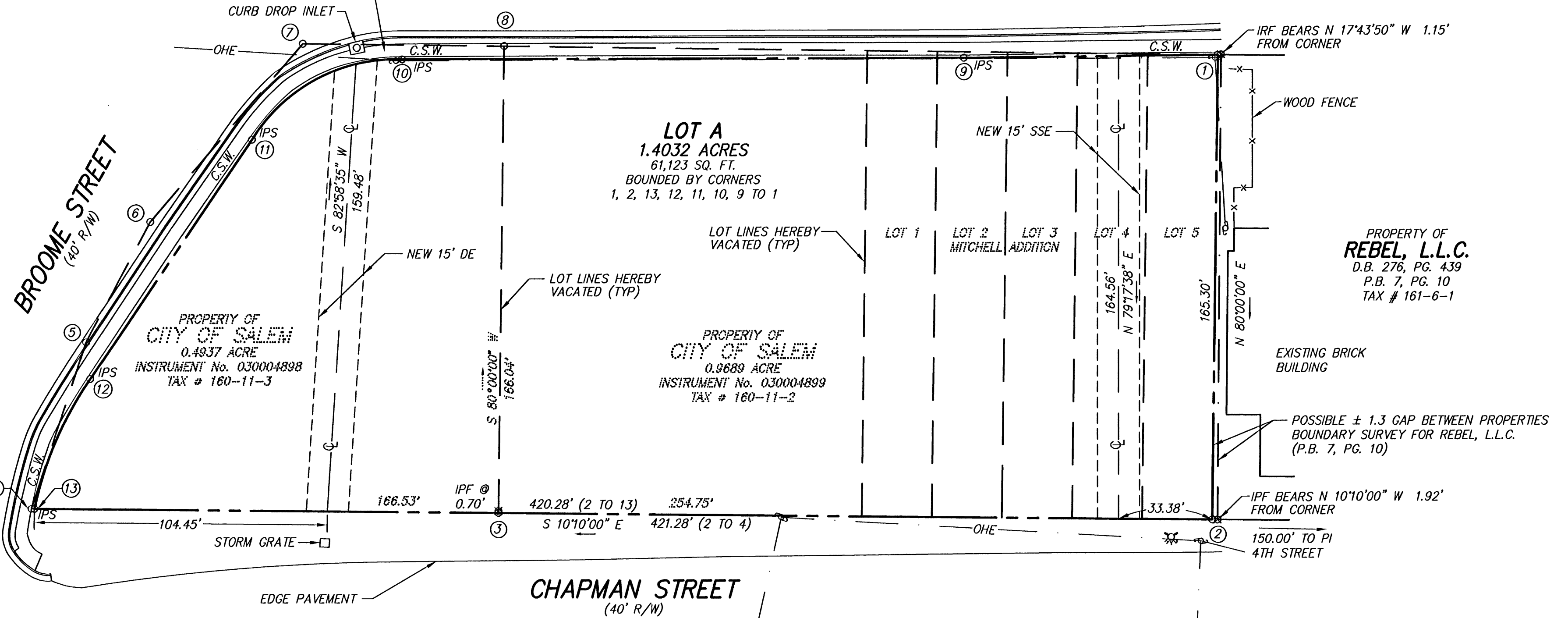


MERIDIAN OF P.B. 9, PG. 98
(BOUNDARY SURVEY FOR CITY OF SALEM)

LINE	BEARING	DISTANCE
4-5	N 82°31'27" W	62.37'
5-6	N 72°35'45" W	48.39'
6-7	N 60°04'10" W	83.56'
7-8	N 10°00'00" W	71.89'
8-1	N 10°00'00" W	254.75'
7-1	N 10°00'00" W	326.64'
1-9	S 11°22'33" E	90.60'
9-10	S 10°50'55" E	200.61'
11-12	S 66°34'47" E	102.75'
13-4	S 10°10'00" E	1.00'

UNION STREET
(50' R/W)

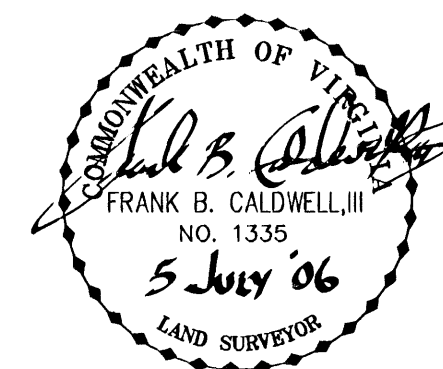
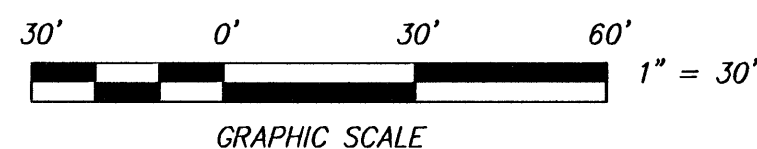


10 TO 11
DELTA=60°45'19"
RAD=60.00'
TAN=35.17'
ARC=63.62'
CHORD=S 38°47'20" E
60.68'

12 TO 13
DELTA=22°54'53"
RAD=126.51'
TAN=25.64'
ARC=50.59'
CHORD=S 77°22'10" E
50.26'

LEGEND

- C.S.W. CONCRETE SIDEWALK
- DE DRAINAGE EASEMENT
- IPF IRON PIN FOUND
- IPS IRON PIN SET
- IRF IRON ROD FOUND
- ☉ POWER POLE
- OHE OVERHEAD ELECTRIC
- SSE SANITARY SEWER EASEMENT
- TYP TYPICAL
- ☼ FIRE HYDRANT



RESUBDIVISION PLAT
FOR

CITY OF SALEM

SHOWING COMBINATION OF 0.9689 ACRE (INSTRUMENT No. 030004899) AND 0.4937 ACRE (INSTRUMENT No. 030004898) AND DEDICATION OF 0.0594 ACRE (2,587 SQ. FT.) OF RIGHT-OF-WAY FOR UNION STREET AND BROOME STREET CREATING HEREON

LOT A 1.4032 ACRES

SITUATE UNION STREET AND CHAPMAN STREET
CITY OF SALEM, VIRGINIA



CALDWELL WHITE ASSOCIATES

ENGINEERS / SURVEYORS / PLANNERS
4203 MELROSE AVENUE, NW
P.O. BOX 8280
ROANOKE, VIRGINIA 24017
(540) 366-3400 FAX: (540) 366-8702

TAX NO.: 160-11-2, 3
DRAWN: JC
CALC.: JC CHK'D.: FBC, III
CLOSED: JC

SCALE: 1" = 30'
JUNE 8, 2006
REV: JULY 5, 2006
N.B.: N/A
W.O.: 06-0023

SHEET 2 OF 2

CLOSED: JC