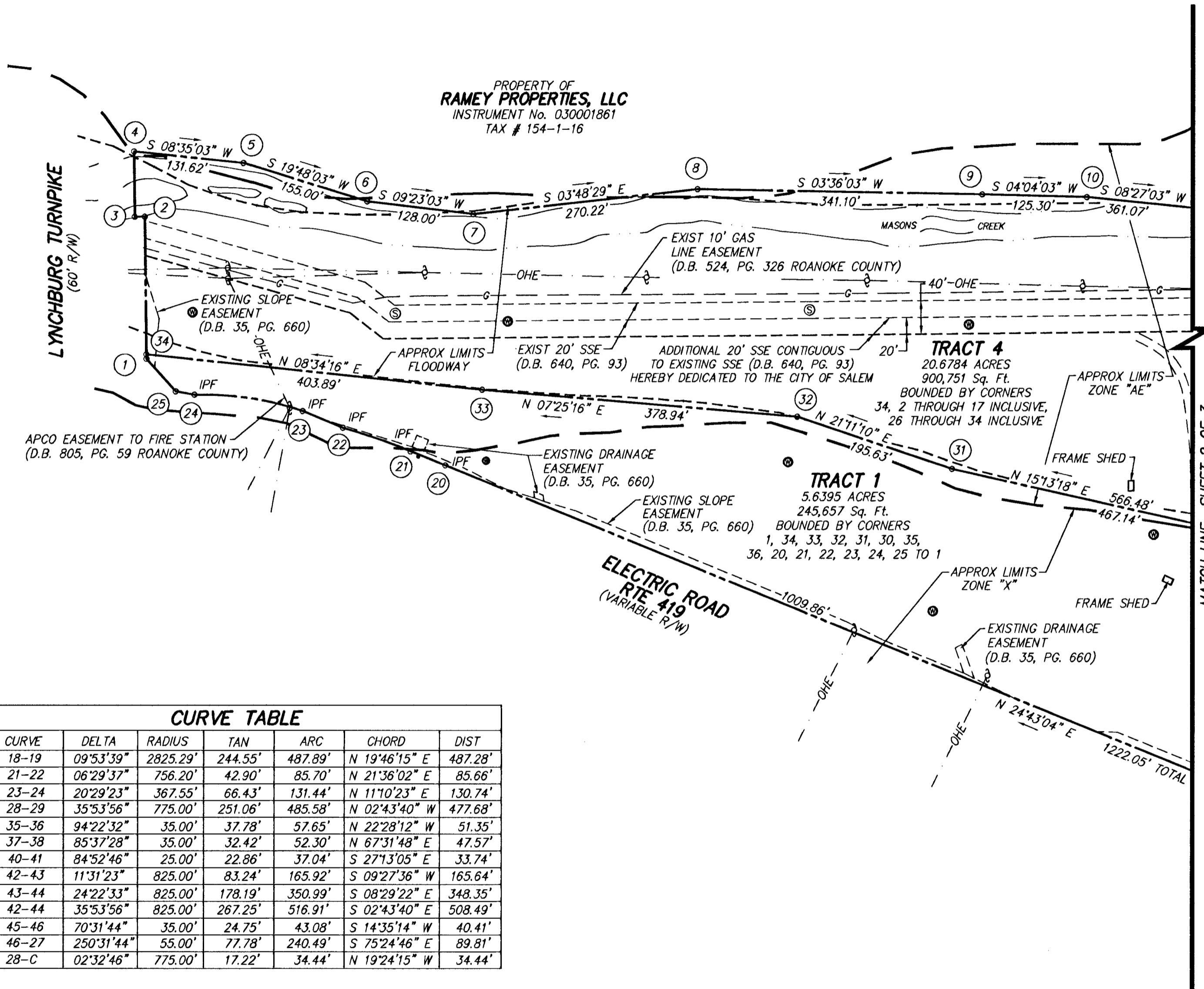


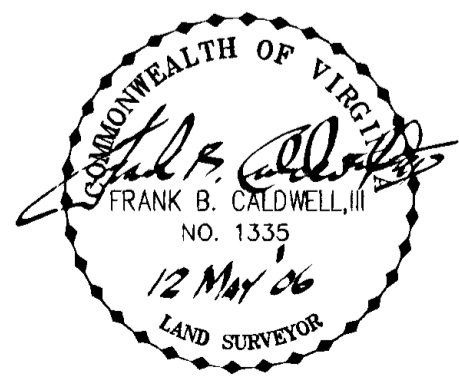
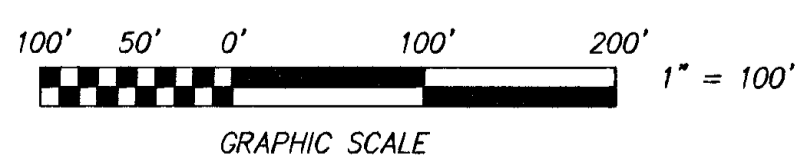
MERIDIAN OF RESUBDIVISION FOR G.E. DRIVES & CONTROLS, INC. P.B. 11, PG. 3 & 4, SLIDE 189

PROPERTY OF
RAMEY PROPERTIES, LLC
INSTRUMENT No. 030001861
TAX # 154-1-16



LINE TABLE		
LINE	BEARING	DISTANCE
1-2	S 88°05'51" E	169.82'
2-3	N 01°54'09" E	12.00'
3-4	S 88°05'51" E	78.00'
20-21	N 24°50'51" E	44.96'
22-23	N 25°01'30" E	52.20'
24-25	N 12°39'05" E	22.83'
25-1	N 50°27'35" E	52.20'
34-1	N 88°05'51" W	5.38'
34-2	S 88°05'51" E	164.44'
38-39	S 69°39'28" E	92.55'
39-40	S 69°39'28" E	113.23'
38-40	S 69°39'28" E	205.78'
41-42	S 15°13'18" W	30.76'
43-47	N 87°46'12" W	132.31'
47-39	N 10°07'00" E	261.35'
30-35	N 69°39'28" W	265.18'
44-45	S 20°40'38" E	56.66'
30-A	S 15°13'18" W	6.82'
A-B	S 22°55'04" E	257.66'
C-D	N 22°27'51" E	299.26'
47-E	S 10°07'00" W	32.33'
19-F	S 22°37'49" W	205.83' TIE ONLY
F-G	S 87°46'12" E	334.31'
D-H	N 87°46'12" W	151.84'

CURVE TABLE						
CURVE	DELTA	RADIUS	TAN	ARC	CHORD	DIST
18-19	09°53'39"	2825.29'	244.55'	487.89'	N 19°46'15" E	487.28'
21-22	06°29'37"	756.20'	42.90'	85.70'	N 21°36'02" E	85.66'
23-24	20°29'23"	367.55'	66.43'	131.44'	N 11°10'23" E	130.74'
28-29	35°53'56"	775.00'	251.06'	485.58'	N 02°43'40" W	477.68'
35-36	94°22'32"	35.00'	37.78'	57.65'	N 22°28'12" W	51.35'
37-38	85°37'28"	35.00'	32.42'	52.30'	N 67°31'48" E	47.57'
40-41	84°52'46"	25.00'	22.86'	37.04'	S 27°13'05" E	33.74'
42-43	11°31'23"	825.00'	83.24'	165.92'	S 09°27'36" W	165.64'
43-44	24°22'33"	825.00'	178.19'	350.99'	S 08°29'22" E	348.35'
42-44	35°53'56"	825.00'	267.25'	516.91'	S 02°43'40" E	508.49'
45-46	70°31'44"	35.00'	24.75'	43.08'	S 14°35'14" W	40.41'
46-27	250°31'44"	55.00'	77.78'	240.49'	S 75°24'46" E	89.81'
28-C	02°32'46"	775.00'	17.22'	34.44'	N 19°24'15" W	34.44'



SUBDIVISION PLAT
FOR
THE ST. JOHN PLACE
COMMERCE CENTER

SHOWING THE RESUBDIVISION OF TRACT A, 35.06 ACRES (INSTRUMENT No. 050005006)
RESUBDIVISION FOR G. E. DRIVES & CONTROLS, INC. (P.B. 11, PG. 3 & 4, SLIDE 189)

PROPERTY OF
WILEY DEVELOPMENT, L.L.C.

SITUATE ELECTRIC ROAD - ROUTE 419
CITY OF SALEM, VIRGINIA

CWA
CALDWELL WHITE ASSOCIATES
ENGINEERS / SURVEYORS / PLANNERS
4203 MELROSE AVENUE, NW
P.O. BOX 8260
ROANOKE, VIRGINIA 24017
(540) 366-3400 FAX: (540) 366-8702

TAX NO.: 155-2-1
DATE: JANUARY 18, 2006
CALC.: JW CHK'D.: FBC, III
CLOSED: JW
SCALE: 1" = 100'
DRAWN: JW
N.B.: WES-43
W.O.: 05-0082
SHEET 3 OF 3