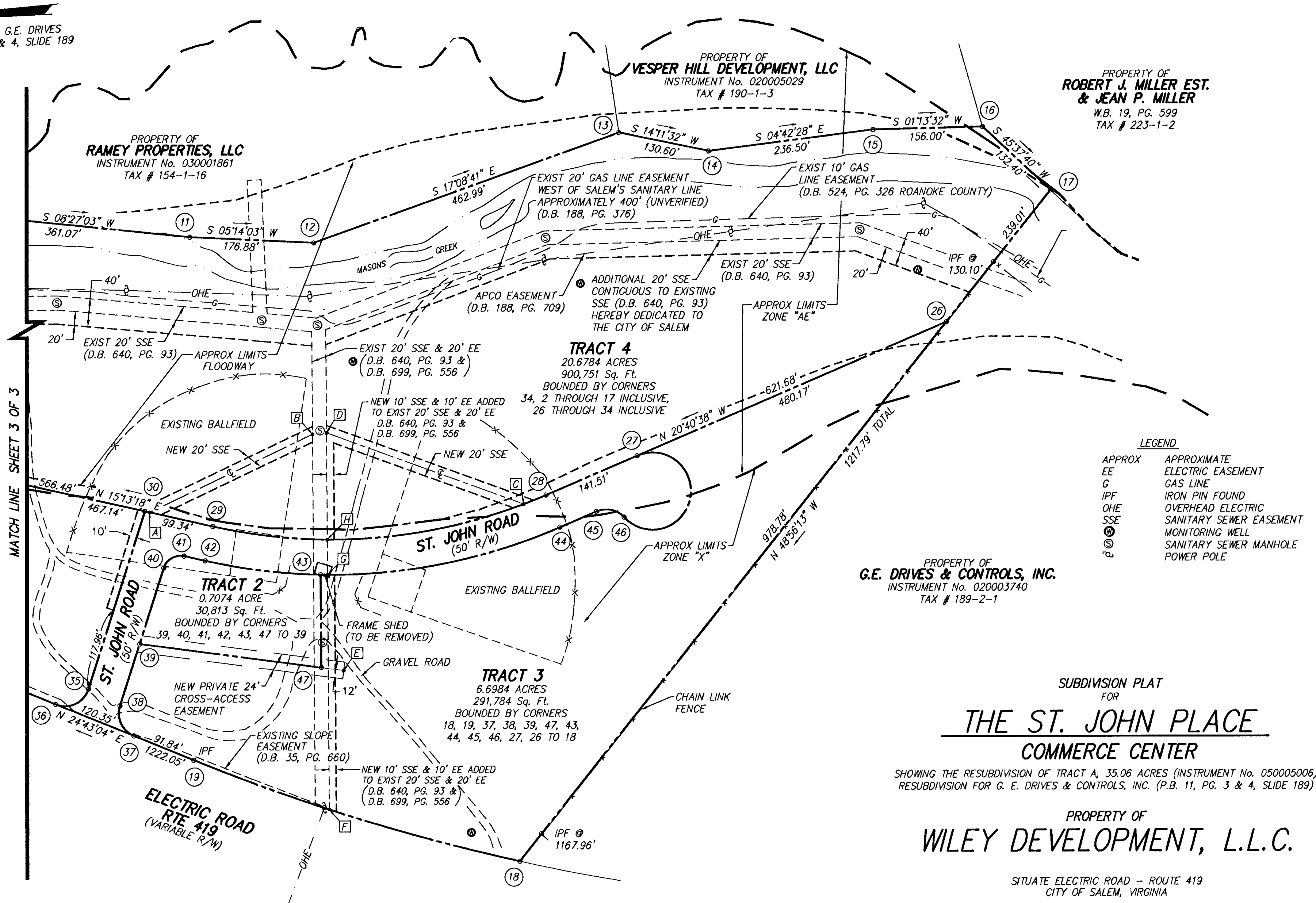


MERIDIAN OF RESUBDIVISION FOR G.E. DRIVES & CONTROLS, INC. P.B. 11, PG. 3 & 4, SLIDE 189



MATCH LINE SHEET 3 OF 3

- LEGEND**
- APPROX APPROXIMATE
  - EE ELECTRIC EASEMENT
  - G GAS LINE
  - IPF IRON PIN FOUND
  - OHE OVERHEAD ELECTRIC
  - SSE SANITARY SEWER EASEMENT
  - ⊙ MONITORING WELL
  - ⊙ SANITARY SEWER MANHOLE
  - ⊙ POWER POLE

PROPERTY OF  
**G.E. DRIVES & CONTROLS, INC.**  
 INSTRUMENT No. 020003740  
 TAX # 189-2-1

SUBDIVISION PLAT  
 FOR  
**THE ST. JOHN PLACE  
 COMMERCE CENTER**

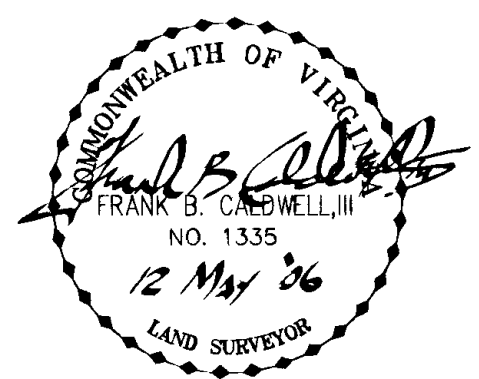
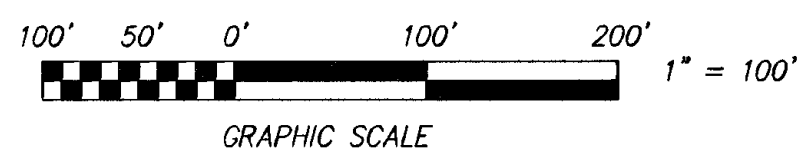
SHOWING THE RESUBDIVISION OF TRACT A, 35.06 ACRES (INSTRUMENT No. 050005006)  
 RESUBDIVISION FOR G. E. DRIVES & CONTROLS, INC. (P.B. 11, PG. 3 & 4, SLIDE 189)

PROPERTY OF  
**WILEY DEVELOPMENT, L.L.C.**

SITUATE ELECTRIC ROAD - ROUTE 419  
 CITY OF SALEM, VIRGINIA

**CWA**  
**CALDWELL WHITE ASSOCIATES**  
 ENGINEERS / SURVEYORS / PLANNERS

4203 MELROSE AVENUE, NW  
 P.O. BOX 6260  
 ROANOKE, VIRGINIA 24017  
 (540) 366-3400 FAX: (540) 366-8702



TAX NO.: 155-2-1  
 DATE: JANUARY 18, 2005  
 CALC.: JW CHK'D.: FBC, III  
 CLOSED: JW

SCALE: 1" = 100'  
 DRAWN: JW  
 N.B.: WES-43  
 W.O.: 05-0082

SHEET 2 OF 3