

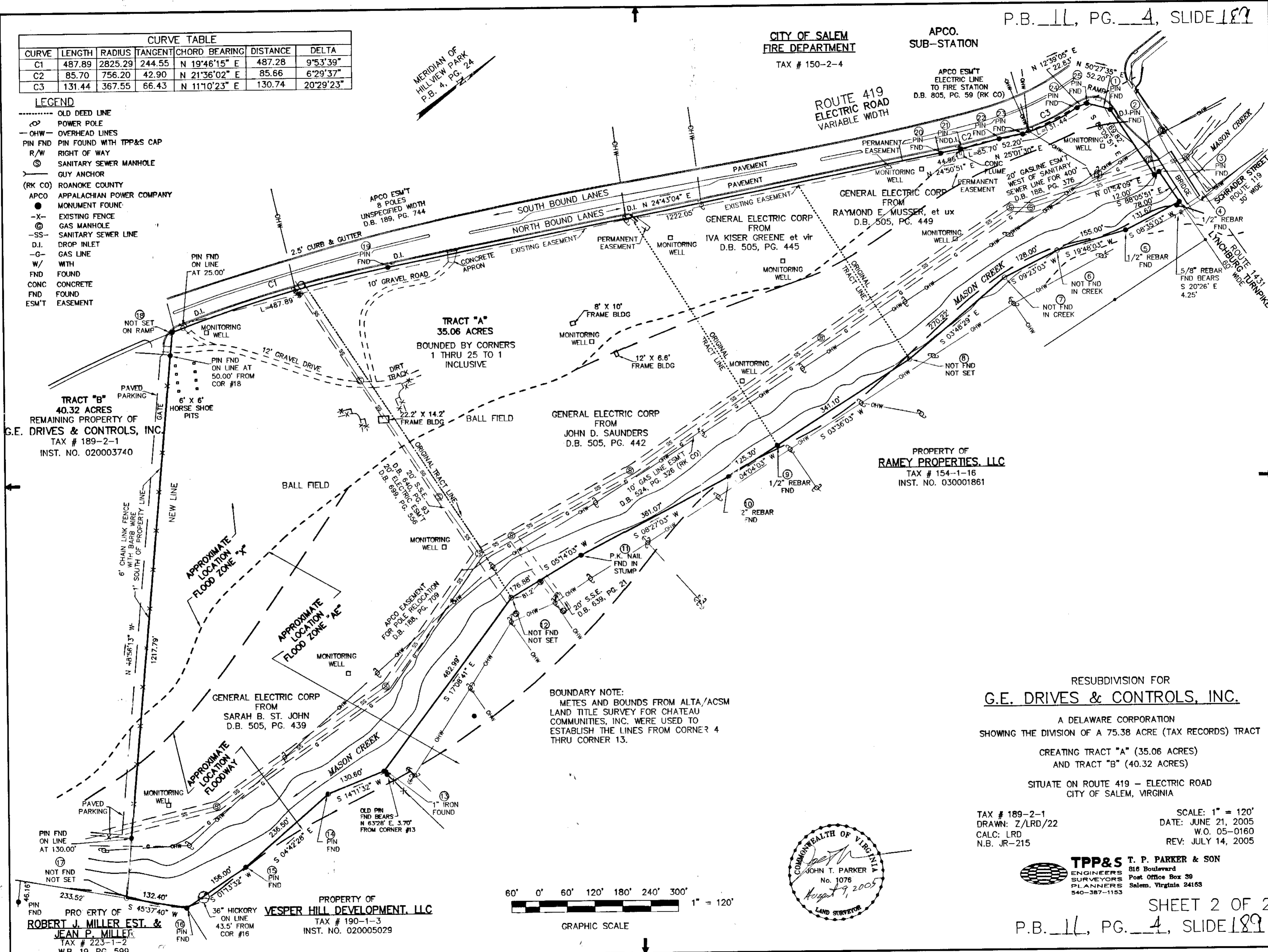
CURVE TABLE					
CURVE	LENGTH	RADIUS	TANGENT	CHORD BEARING	DELTA
C1	487.89	2825.29	244.55	N 19°46'15" E	487.28
C2	85.70	756.20	42.90	N 21°36'02" E	85.66
C3	131.44	367.55	66.43	N 11°10'23" E	130.74

- LEGEND**
- OLD DEED LINE
  - POWER POLE
  - OHW — OVERHEAD LINES
  - PIN FND PIN FOUND WITH TPP&S CAP
  - R/W RIGHT OF WAY
  - ⊙ SANITARY SEWER MANHOLE
  - ⊙ GUY ANCHOR
  - (RK CO) ROANOKE COUNTY
  - APCO APPALACHIAN POWER COMPANY
  - MONUMENT FOUND
  - X- EXISTING FENCE
  - ⊙ GAS MANHOLE
  - SS- SANITARY SEWER LINE
  - D.I. DROP INLET
  - G- GAS LINE
  - W- WITH
  - FND FOUND
  - CONC CONCRETE
  - FND FOUND
  - ESM'T EASEMENT

MERIDIAN OF HILLVIEW PARK  
P.B. 4, PG. 24

CITY OF SALEM  
FIRE DEPARTMENT  
TAX # 150-2-4

APCO.  
SUB-STATION



**TRACT "B"**  
40.32 ACRES  
REMAINING PROPERTY OF  
G.E. DRIVES & CONTROLS, INC.  
TAX # 189-2-1  
INST. NO. 020003740

**TRACT "A"**  
35.06 ACRES  
BOUNDED BY CORNERS  
1 THRU 25 TO 1  
INCLUSIVE

GENERAL ELECTRIC CORP  
FROM  
JOHN D. SAUNDERS  
D.B. 505, PG. 442

PROPERTY OF  
**RAMEY PROPERTIES, LLC**  
TAX # 154-1-16  
INST. NO. 030001861

GENERAL ELECTRIC CORP  
FROM  
SARAH B. ST. JOHN  
D.B. 505, PG. 439

**BOUNDARY NOTE:**  
METES AND BOUNDS FROM ALTA/ACSM  
LAND TITLE SURVEY FOR CHATEAU  
COMMUNITIES, INC. WERE USED TO  
ESTABLISH THE LINES FROM CORNER 4  
THRU CORNER 13.

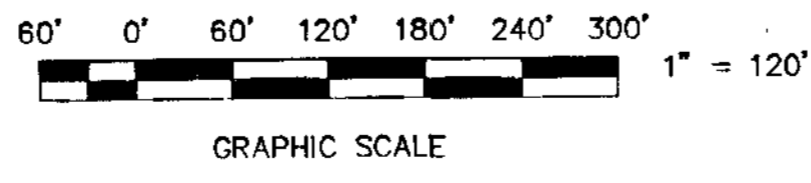
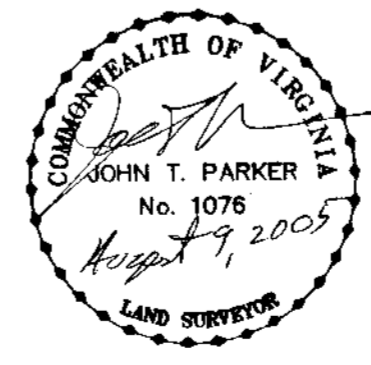
RESUBDIVISION FOR  
**G.E. DRIVES & CONTROLS, INC.**

A DELAWARE CORPORATION  
SHOWING THE DIVISION OF A 75.38 ACRE (TAX RECORDS) TRACT  
CREATING TRACT "A" (35.06 ACRES)  
AND TRACT "B" (40.32 ACRES)  
SITUATE ON ROUTE 419 - ELECTRIC ROAD  
CITY OF SALEM, VIRGINIA

TAX # 189-2-1  
DRAWN: Z/LRD/22  
CALC: LRD  
N.B. JR-215

SCALE: 1" = 120'  
DATE: JUNE 21, 2005  
W.O. 05-0160  
REV: JULY 14, 2005

**TPP&S T. P. PARKER & SON**  
ENGINEERS 816 Boulevard  
SURVEYORS Post Office Box 39  
PLANNERS Salem, Virginia 24163  
540-387-1153



PROPERTY OF  
**VESPER HILL DEVELOPMENT, LLC**  
TAX # 190-1-3  
INST. NO. 020005029